



ALL-NEW

SD

SMART FLEXIBLE DEPOSITOR

Patent Pending



· Smart Hygienic Design · More Flexibility · Reduced Wage Cost · Zero-Waste Operation · High Output · No Product Damage ·

SFD

The SFD or “Smart Flexible Depositor” is a superior confectionery production solution. This top-of-the-range machine can deposit the most diverse variety of products, ranging from raisins to hazelnuts to almond chips. The SFD combines a wide range of applications with enormous speed and exceptional accuracy, far ahead of its competitors.



Concept

The granular products are introduced at the intake side of the machine. A transverse chute then transfers the product into separate trays which follow a track around the oscillating dosing system.

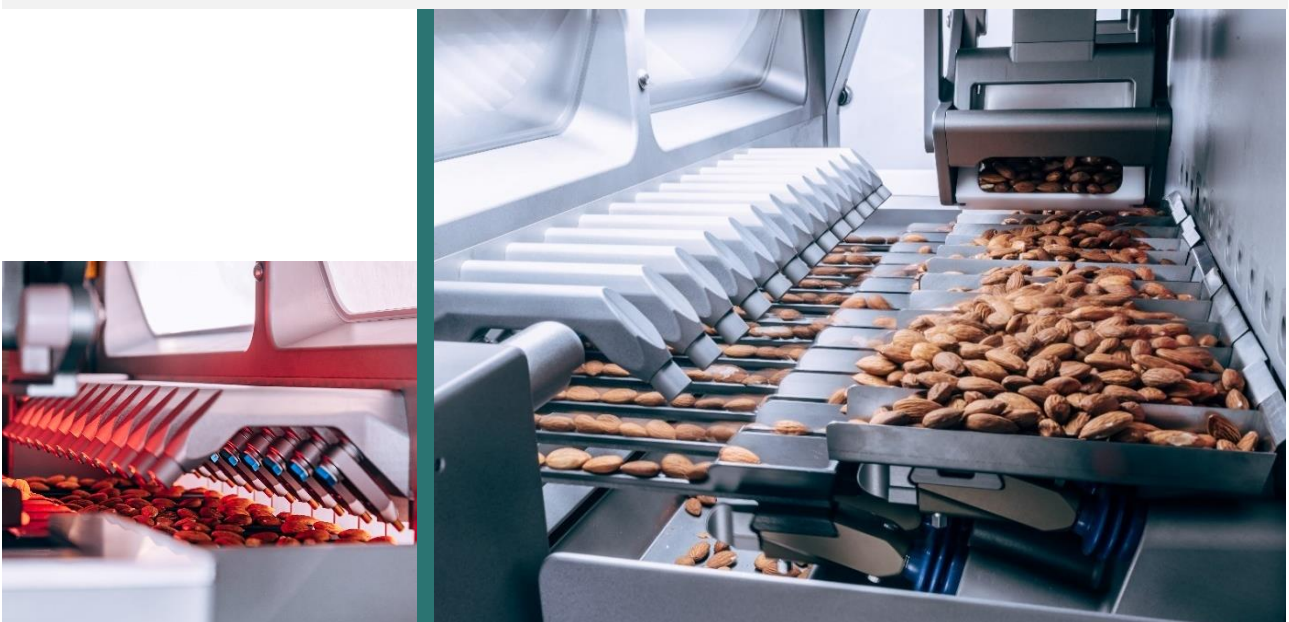




After each tray has been filled individually, it spreads its load over the buffer chutes on the first level of the oscillating dosing system, a brand-new technology developed and patented by Mecaniek Chevalier.



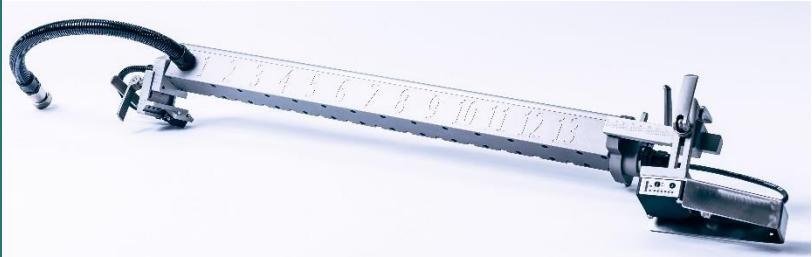
The buffer chutes supply the dosing chutes underneath. The dosing chutes deposit the carefully measured amount of granular products per channel. The product is then released with meticulous precision: in the perfect spot, at the right moment. Each channel of the oscillating dosing system works entirely independently in a closed loop with individual sensors.



Features

Smart and Flexible

Smart: Intelligent in all respects. The SFD continuously monitors the supply of products on the conveyor underneath and only deposits granular products when needed. This avoids contamination and wastage.



Do you wish to use one depositor on several production lines without compromising the quality of the process and the product?

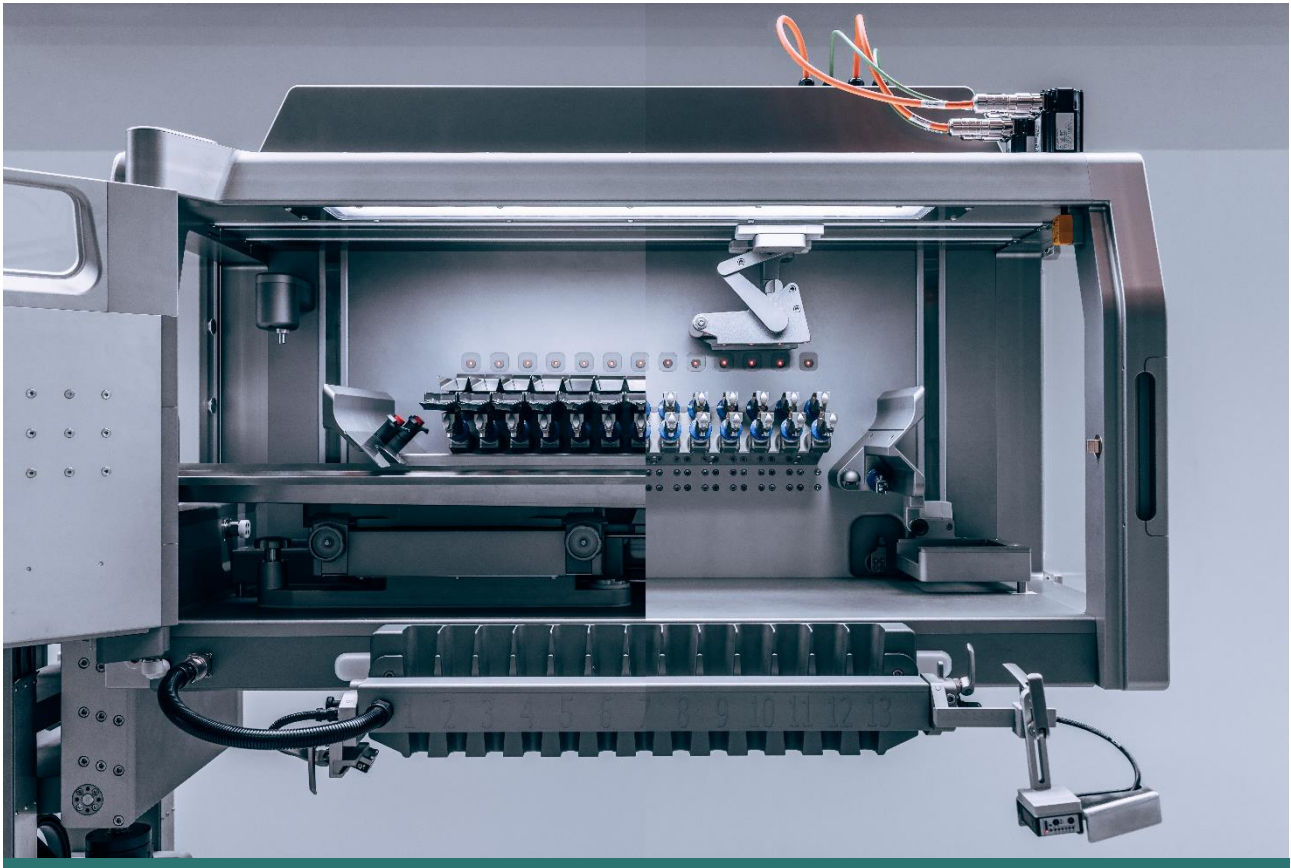
Then the SFD is the right choice. Always accompanied by a mobile carrier that allows the height as well as the angle to be set, the SFD is easily moved to execute a different task within your production facilities.

The SFD's flexibility sets a new standard for product variation within short time intervals.

Flexible: The possibilities are endless. The deposition can be one at a time, an exact number of granular products or a consistent fine line of smaller granulate. At Mecaniek Chevalier your recipe is tailor-made.

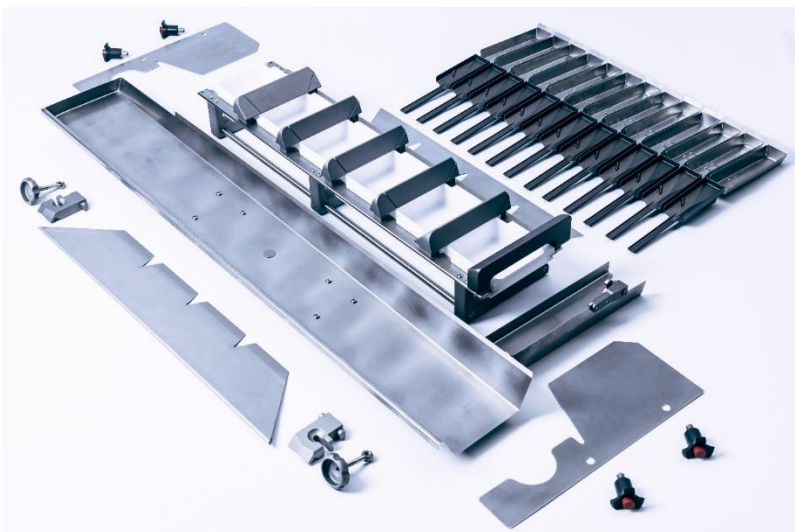
All depositing products with their specific applications are assigned a program with matching dosing chutes.

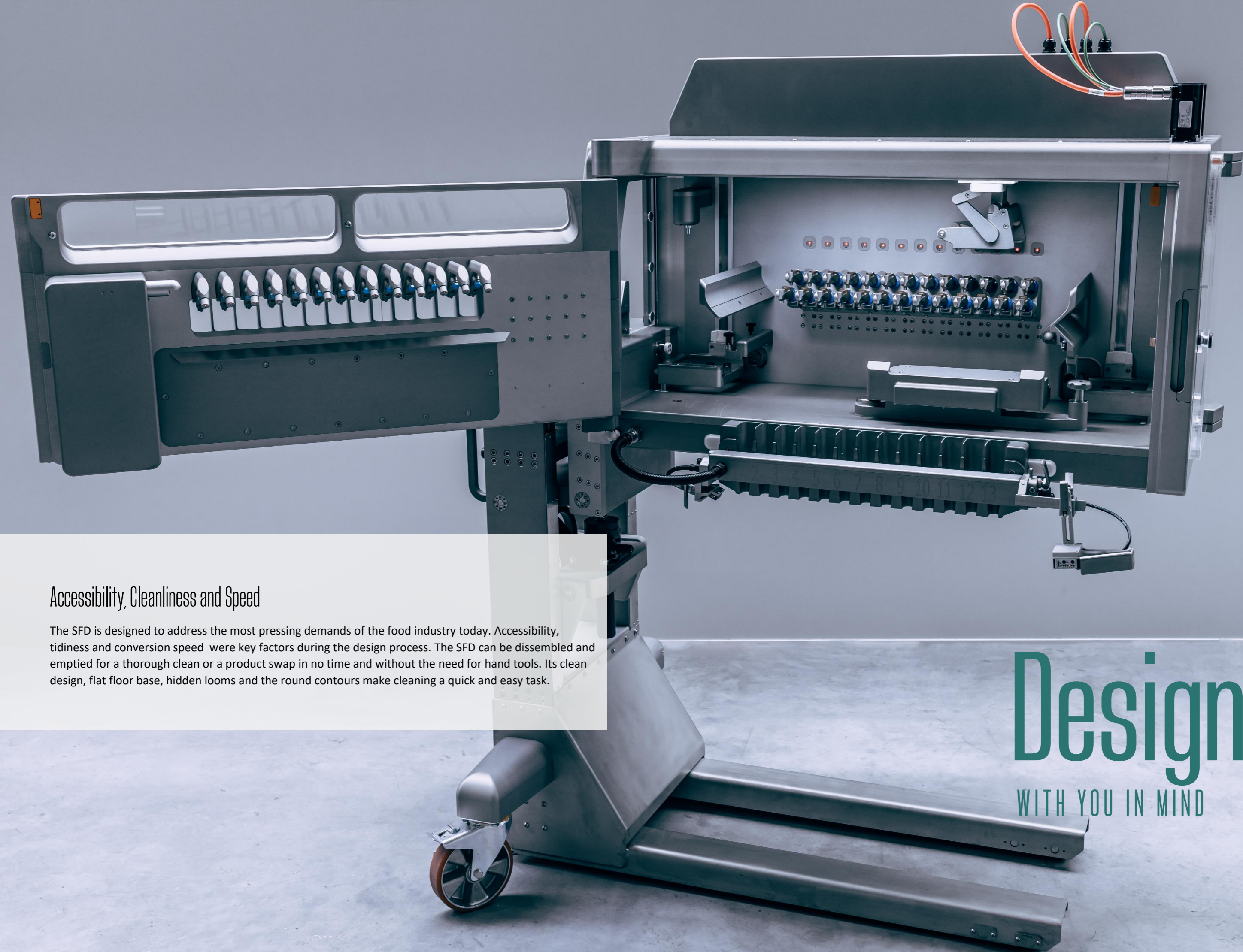




No Spanners, No Tools, No Efforts

In terms of usability Mecaniek Chevalier ensures that the SFD can be taken apart by any person. It requires no special skills to remove the main internal components. We reduced the number of components to a bare minimum in our constant search for simplicity and robustness.





Accessibility, Cleanliness and Speed

The SFD is designed to address the most pressing demands of the food industry today. Accessibility, tidiness and conversion speed were key factors during the design process. The SFD can be disassembled and emptied for a thorough clean or a product swap in no time and without the need for hand tools. Its clean design, flat floor base, hidden looms and the round contours make cleaning a quick and easy task.

Designed
WITH YOU IN MIND



Gentle Product Handling

The SFD is capable of handling fragile products without damage. The granular products follow a frictionless trajectory. Their distribution over the buffer chutes is a controlled and optimized process. Hitches are avoided by permanently monitoring the supply in the buffer chutes and by feeding it back into the tray loop control system.

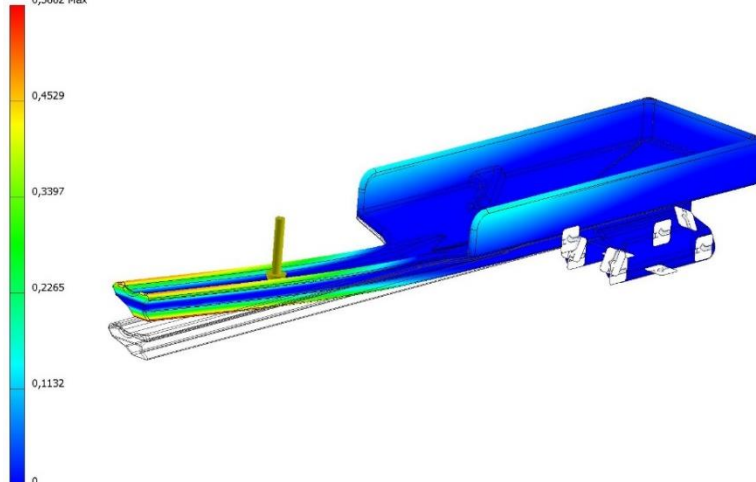
Durability, Reliability, Sustainability

Our prime concern - the safety of the operators – goes together with our commitment to perfection. During the development of the SFD a lot of attention has gone into the optimisation of all moving parts.

With FEA technology the most appropriate materials were chosen and purified for all the vital components. Additionally our design decisions were subjected to extensive and rigorous durability testing.

The result is a machine that excels in safety, reliability and sustainability.

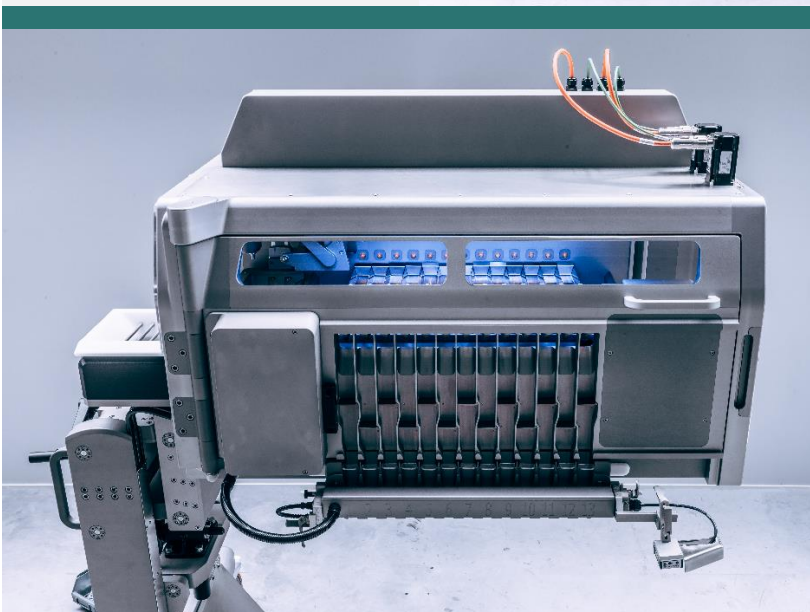
Type: X Displacement
Unit: mm
8/06/2020, 13:49:45
0,5662 Max



User-friendly Interface

The SFD has an unmistakably clear interface. Its accessibility and simplicity facilitate a quick learning curve for the operators.

All the sensors used in the SFD can be configured through the interface display without any mechanical adjustments.

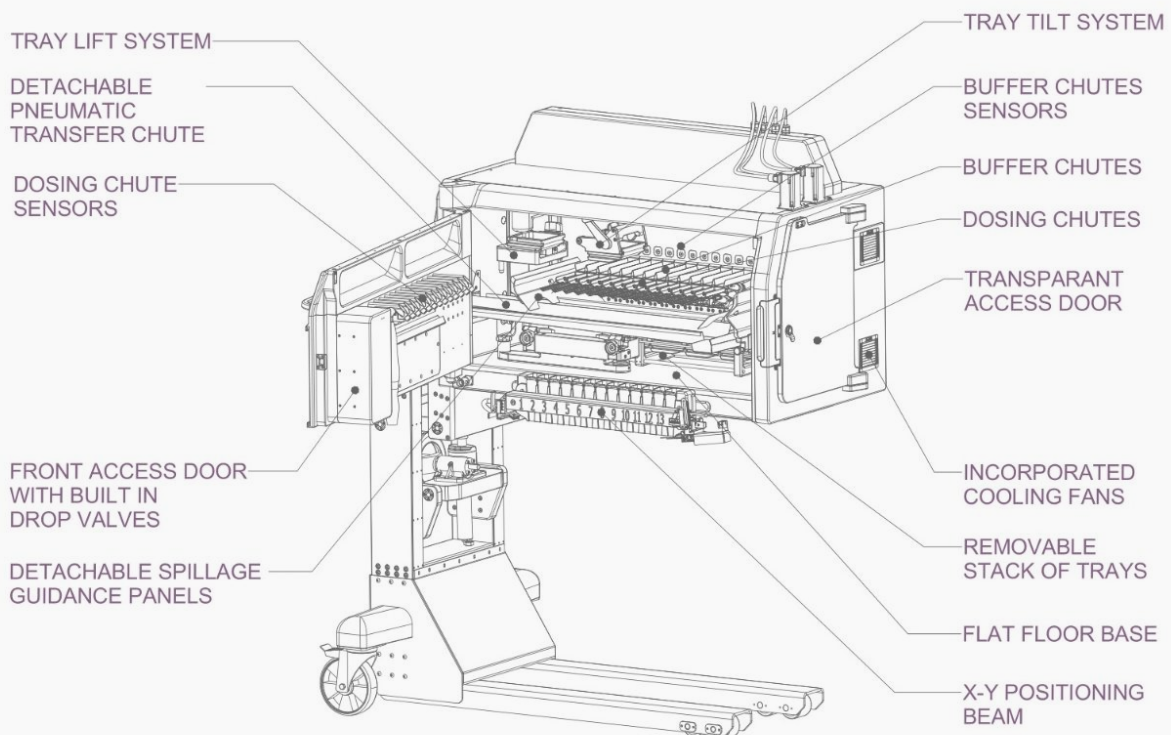
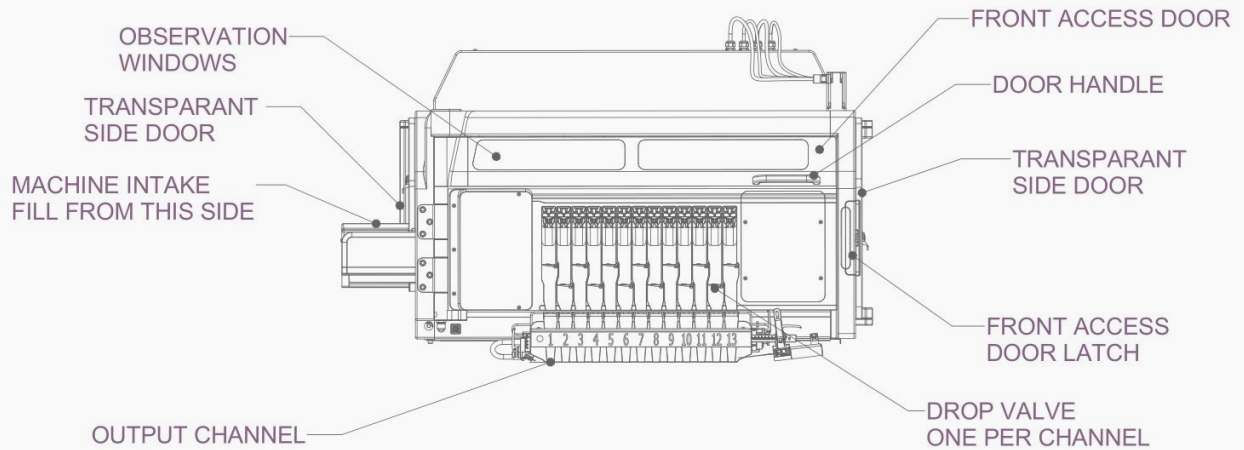


Notified by a Glimpse

The SFD contains a configurable light unit. Different colours are set by program and constantly reflect the operation status of the machine.

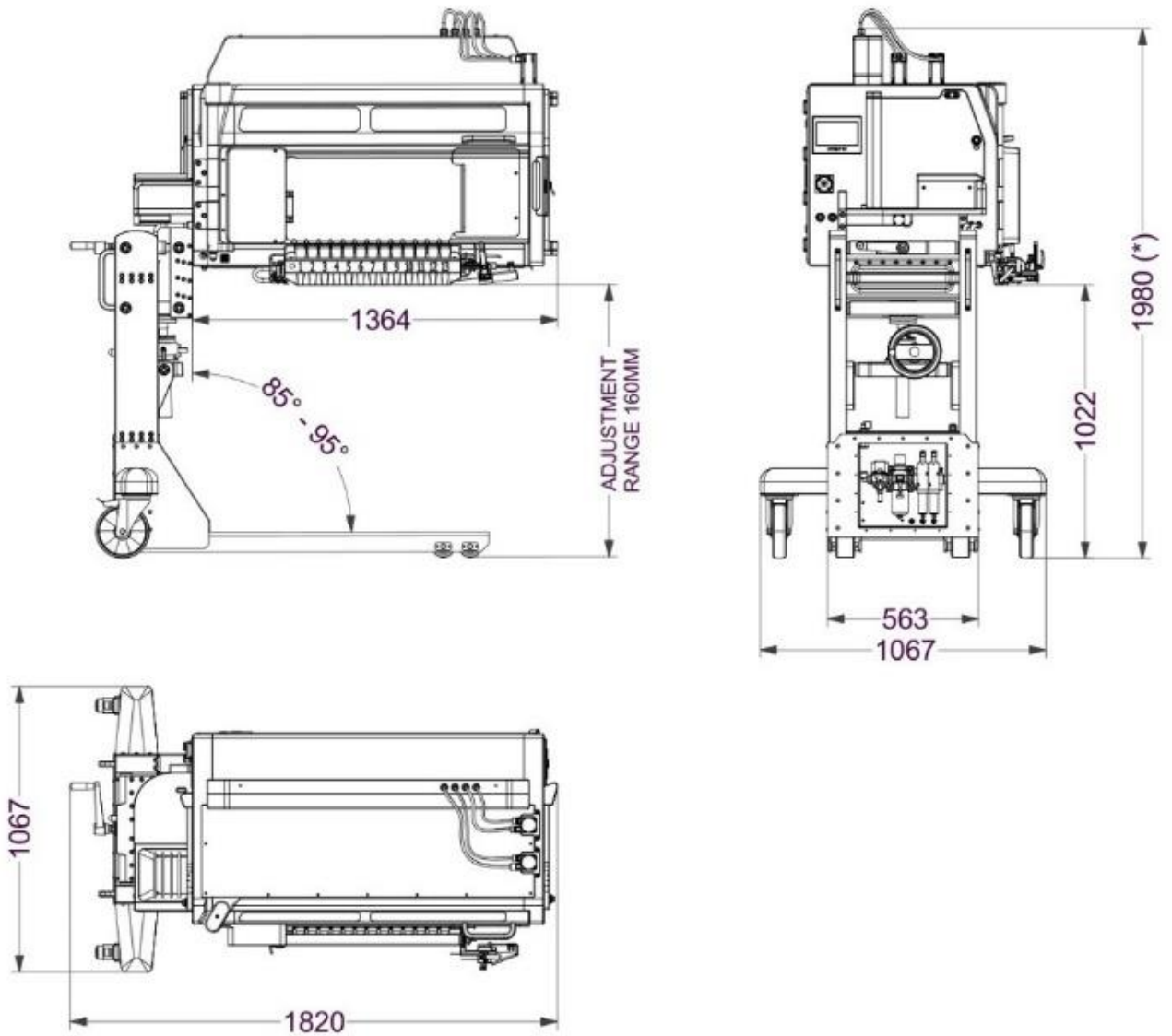
This makes monitoring the production process an easy and smooth affair.

Layout



Dimensions

All dimensions are in mm



(*) May vary depending on customers application

Specifications | Optional Extras

Technical Data	
Weight depositor unit	520 Kg
Weight mobile carrier	237 Kg
Total weight*	757 Kg (for 13 channels)
Max height*	2050 mm
Max width	1200 mm
Electrical	16 A fuse / mono supply
Compressed air supply	6 to 8 Bar (3/4" supply)
Depositor unit output	+/- 60 products/min per channel
Number of channels	8 to 20
Pitch between channels	Minimum 35 mm

(*) May vary depending on specifications and customer requirements

Optional Extras	
Line integration	Recommended
Bracket to fix the SFD to your conveyor	Recommended for stationary use
Height detection system	Recommended for multiple use
Conveyor belt	Customized conveyor to suit your demands
Training session	Recommended for all operators

Contact

Mecanik Chevalier bvba
 Pont West 105
 Industriezone ROK 52
 9600 Ronse
 Belgium

+32 55 42 01 90
info@mecanik-chevalier.be
www.mecanik-chevalier.be

